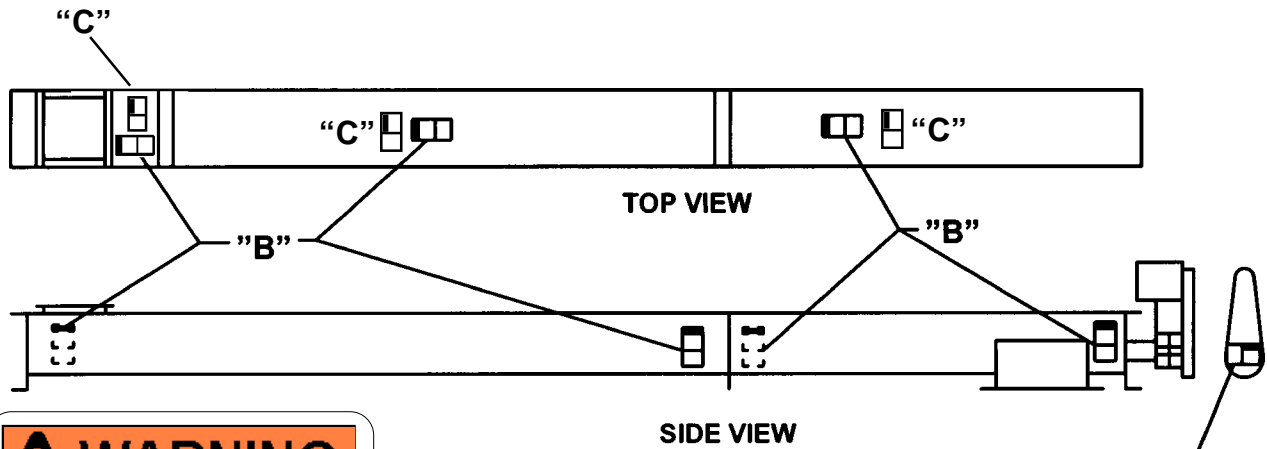


Product: Screw Conveyors

Equipment: Screw Conveyor



WARNING

CVS930011

Exposed screw and moving parts can cause severe injury

LOCK OUT POWER before removing cover or servicing

OPTIONAL

- NEAR SIDE
- FAR SIDE

WARNING

CHS930001

Exposed moving parts can cause severe injury

LOCK OUT POWER before removing guard

"A"

WARNING

CHS991026

Walking or standing on conveyor covers or gratings can cause serious injury

STAY OFF

"C"

WARNING

CHS930011

Exposed screw and moving parts can cause severe injury

LOCK OUT POWER before removing cover or servicing

USE LABEL "A" ON BELT GUARD
 USE LABEL "B" ON ENDS OF TROUGH, MIDDLE OF COVERS AND AT INLET OPENING. (Use Vertical Or Horizontal Label Depending on Space Available)
 USE LABEL "C" ON TOP OF COVERS

