



Bulk Handling Conveyors Equipment: Belt Conveyors

To be placed on removable guards to warn that operation of the machinery with guards removed would expose chains, belts, gears, shafts, pulleys, couplings, etc. which create hazards



“A”

General warning to personnel that a conveyor’s moving parts, which operate unguarded by necessity of function, i.e. belts, rollers, terminal pulleys, etc., create hazards to be avoided; in particular, conveyors which stop and start by automatic control near operator work stations would use this label.

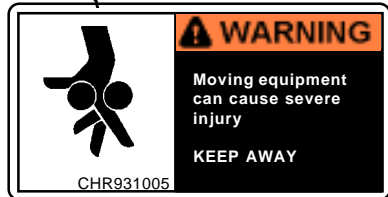
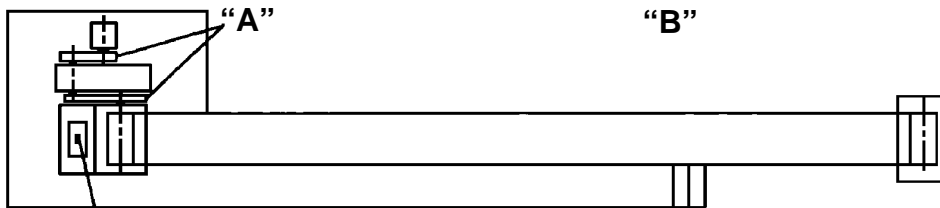


“B”

To be placed on removable guards to warn that operation of the machinery with guards removed would expose chains, belts, gears, shafts, pulleys, couplings, etc. which create hazards.

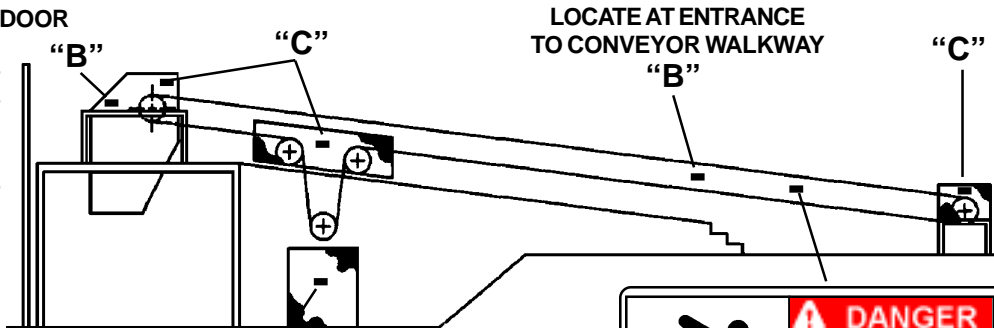


“C”



ON INSPECTION DOOR

To be located on conveyors where there are exposed moving parts which must be unguarded to facilitate function, i.e. rollers, pulleys, shafts, chains, etc.



LOCATE AT ENTRANCE TO CONVEYOR WALKWAY



To be placed at entrances to enclosed areas which would expose personnel to operational or environmental hazards which should only be entered by trained and authorized personnel under specific conditions; Examples, lifting conveyors, transfer car aisleways, confined spaces, etc.



SPACE UP TO A MAXIMUM OF 50' FT. CENTERS (WALKWAY SIDES)

To be placed on a maximum of 50' centers along Bulk Handling conveyors which provide surfaces and profiles attractive, but hazardous, for climbing, sitting, walking, or riding. (20' centers for Unit Handling conveyors).