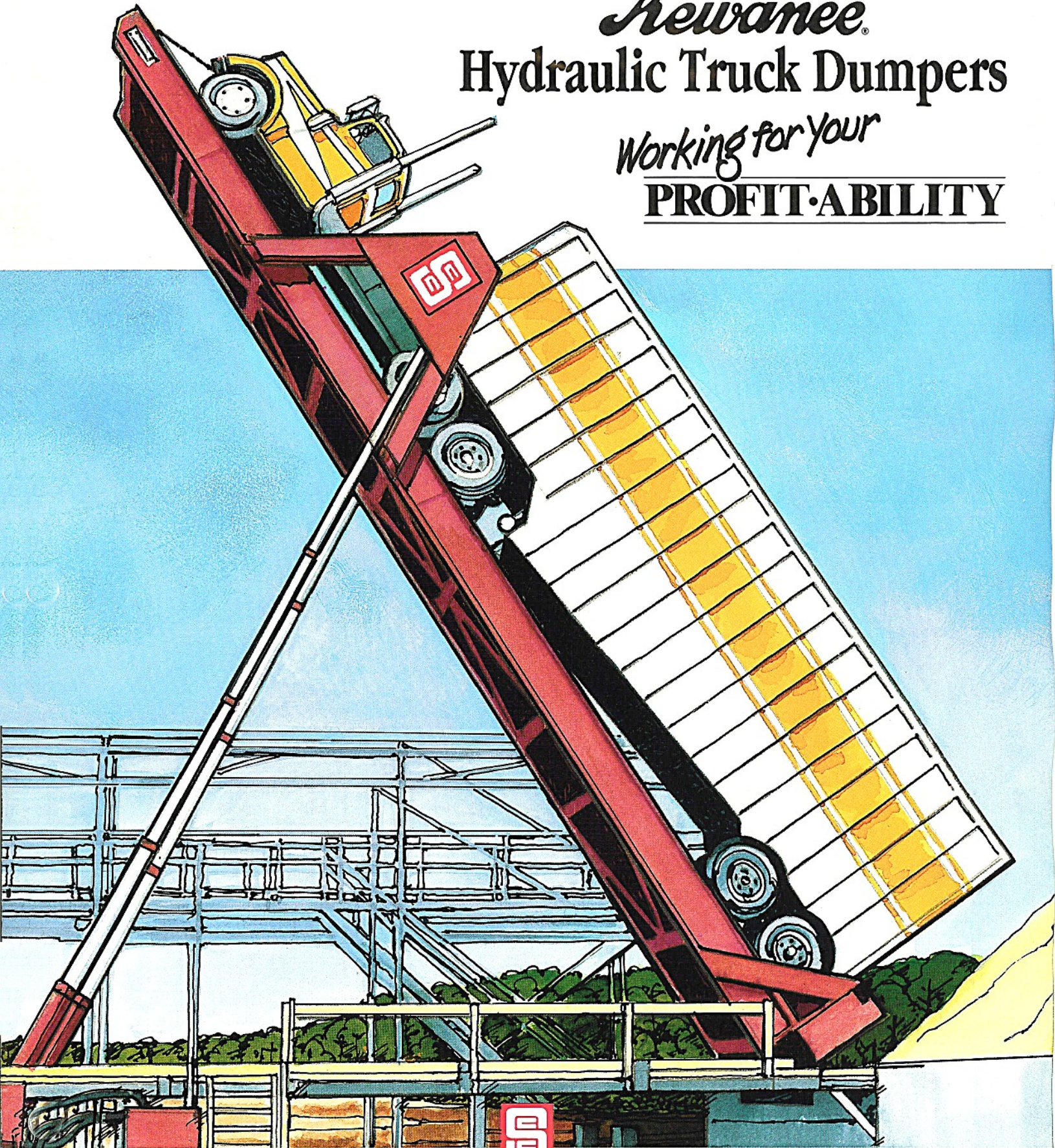


Kewanee
Hydraulic Truck Dumpers
Working for your
PROFIT·ABILITY



Screw Conveyor Corporation

Kewanee Hydraulic Truck Dumpers —

No matter what you're hauling, unloading is the most time consuming of all shipping operations. Kewanee Hydraulic Truck Dumpers change that! Now, you can unload anything within minutes from grain to scrap metal... apples to bauxite . . . wood chips to green beans . . . simply, through precise-control hydraulic power.

More than 40 years of engineering has gone into making Kewanee Hydraulic Truck Dumpers the very best in the

industry. Simple to operate. Easy to maintain. And Kewanee Hydraulic Truck Dumpers are designed and built to last. The dumpers pictured below are a good example of our quality — they've been in use for over 20 years. That's what quality engineering and backup service brings to every Kewanee Hydraulic Truck Dumper.

Kewanee's dual hydraulic cylinders are engineered to handle up to 160,000 lbs. Our twin hinges are made of the

finest and toughest steel alloys. Our rigidly built, non-twisting, reinforced frame is designed to create a solid 4-point base from which to raise the load safely and evenly. The result: a truck dumper you can count on year after year. And one man at the central operations panel can safely and accurately control every phase of the operation, including the regulated rate of descent.

Screw Conveyor Corporation
— maker of Kewanee Truck



Designed Simple...Safe...Efficient...

Dumpers – offers a variety of dumper configurations, installations and service to handle your specific needs.

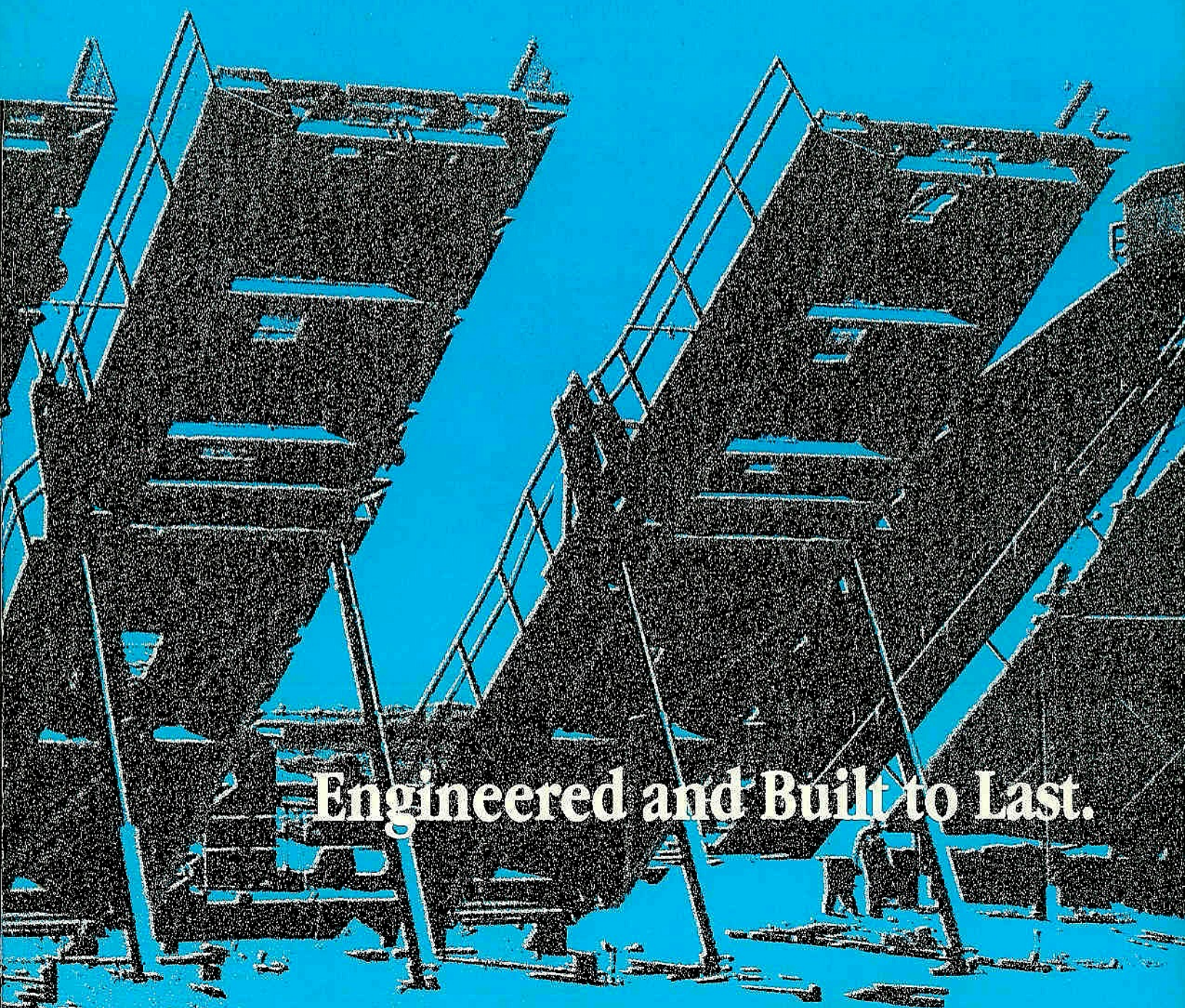
- Six standard platform lengths – 34, 40, 50, 60, 65 and 70 ft. Special lengths up to 80 ft. can be made to suit your application.
- Available in either pit type or grade level models.
- Single and Dual Motors (25, 30, 40 and 50 HP) used to power the system.
- Variety of cylinder sizes for

different angles of tilt, or load capacities.

- Specialized, tested safety features including full length wheel guides and axle hold-down assemblies on all models over 45° angle of tilt.

Kewanee Hydraulic Truck Dumpers are shipped factory assembled and ready to install. Power units are pre-tested before shipment. Delivery is fast. Installation on smaller grade level models usually can be completed in two or three days.

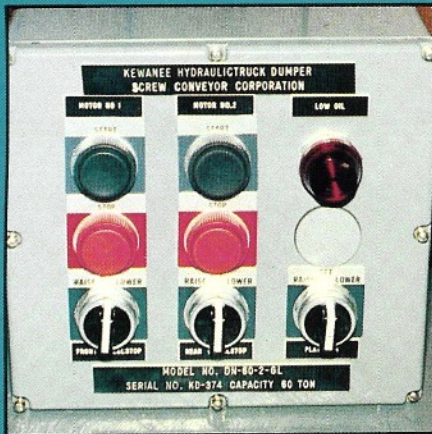
In addition, Kewanee offers complete inspection and maintenance service using our own specially trained technicians to check oil levels, cylinders, hinges, mechanical connections, limit switches, and operating ranges. If needed, our service representative can re-pack and align cylinders, clean oil reservoirs, and make minor adjustments to keep the system in first-class operating order.



Engineered and Built to Last.

Kewanee Hydraulic Truck Dumpers...

Kewanee engineers have for more than 40 years developed and refined each element to create a complete "everything-you-need" system down to the nuts and bolts. Each component is inspected and pre-tested at the factory before final shipment. Here is what you get:



- A structural steel platform complete with collapsible wheel stops or fixed back-stop, full length wheel guides, and axle hold-down assemblies. Adjustable or fully retractable backstops are also available. Chain tie-downs are standard for tilts of 45° and over – optional for tilts of 43° and less.

- Standard Design Features
- Optional Features

PLEASE NOTE: Motor starters and installation are not included – however, arrangements for installation can be made.

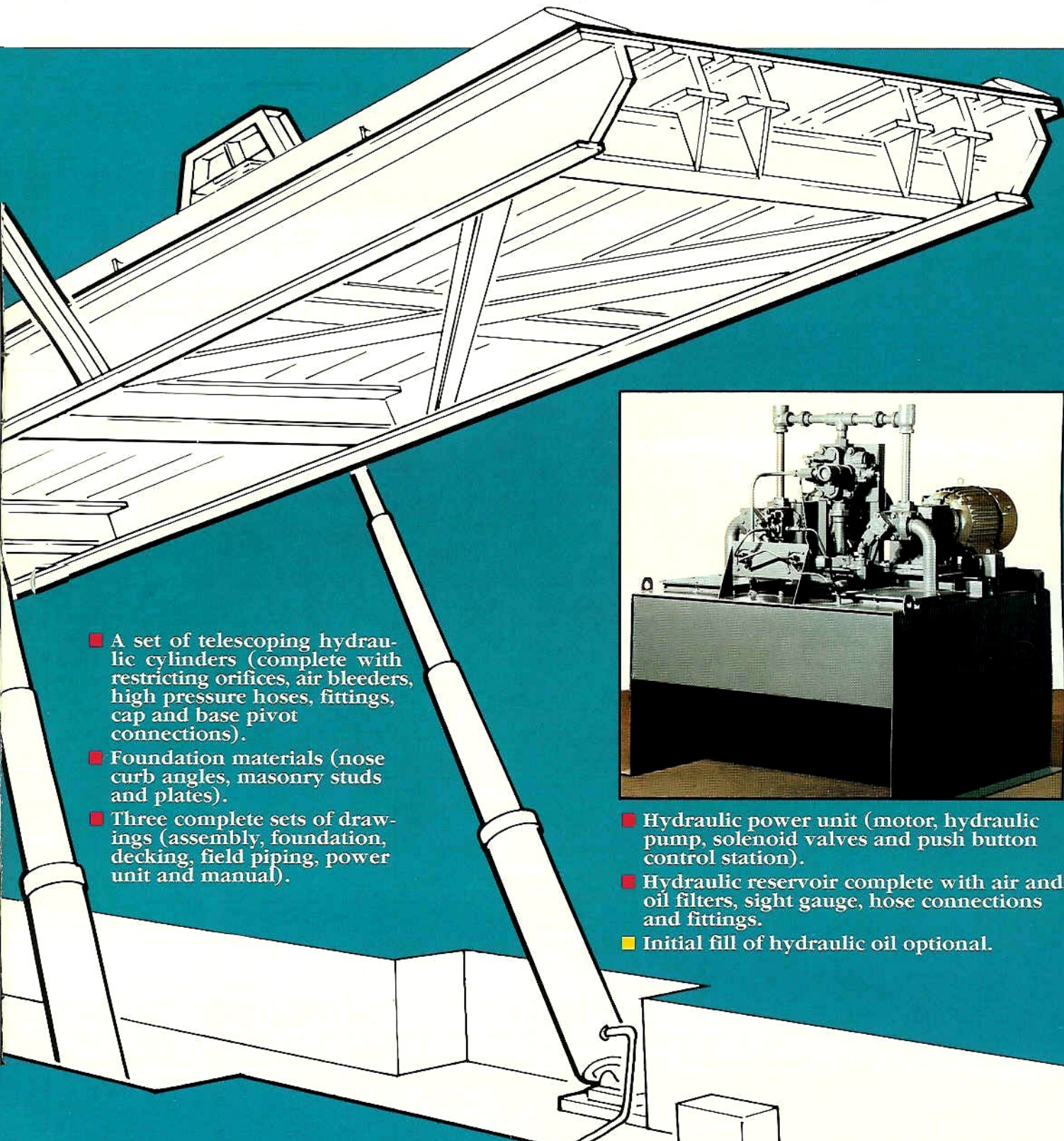
Options:

- A Kewanee Staff Engineer is available for inspection and start-up.
- Scale, either separated platform version or set up under dumper.
- Special safety options including an in operation alarm system which uses flashing lights or other warning devices when the lift is in motion.
- Handrails, access walkways and traffic gates.
- Power Unit Enclosures to handle climate extremes. Ventilated for summer heat and heated for below-zero operation.

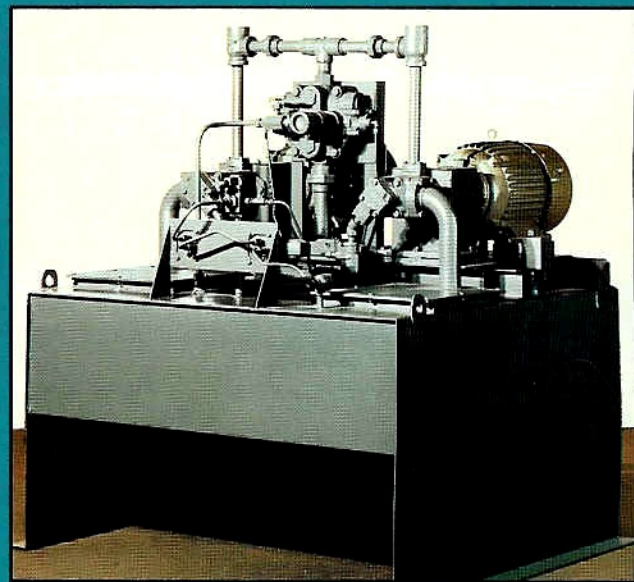


- Field Service Technicians are available for long-term maintenance.

Engineered as a Complete Package.



- A set of telescoping hydraulic cylinders (complete with restricting orifices, air bleeders, high pressure hoses, fittings, cap and base pivot connections).
- Foundation materials (nose curb angles, masonry studs and plates).
- Three complete sets of drawings (assembly, foundation, decking, field piping, power unit and manual).



- Hydraulic power unit (motor, hydraulic pump, solenoid valves and push button control station).
- Hydraulic reservoir complete with air and oil filters, sight gauge, hose connections and fittings.
- Initial fill of hydraulic oil optional.

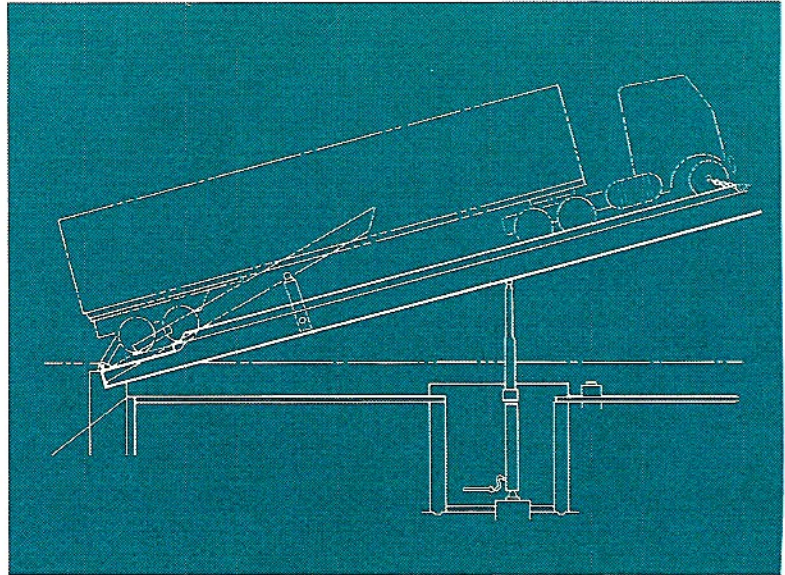
Working for your

PROFIT·ABILITY

Custom Unloading.

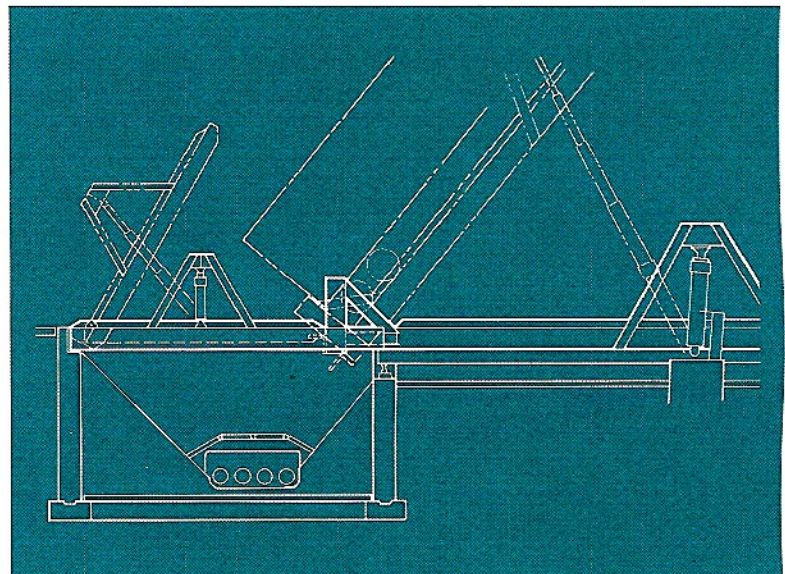
DUMPER WITHIN A DUMPER

When the unloading process involves removing products from a variety of different sized vehicles (semi-trailers, 6 X 6's, farm wagons, pick-ups) Kewanee's Dumper Within a Dumper does the job. It has adjustable wheel stops and tilt control (up to 35°) to accommodate a variety of trucks and carriers. This system is commonly used for grain and peanut unloading.



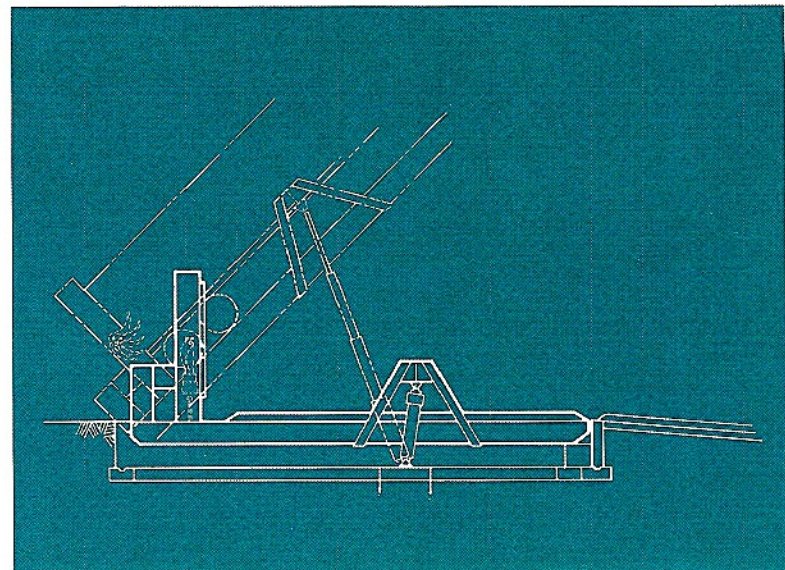
DRIVE-THRU DUMPER PIT DOOR AND COLLAPSIBLE BACKSTOP

Kewanee engineers have developed a drive-thru lift for the ultimate in speed and efficiency. Trucks and carriers of various sizes can be lined up and unloaded in a single direction. When down, the pit door serves as a bridge to the lift. In the up position, the door opens onto a live-bottom bulk mover which clears the pit quickly and efficiently. A fully retractable backstop holds the vehicle in place during the unloading. After the lift is lowered, the truck drives forward exiting the dumper while the next vehicle pulls into position.



DUMPER WITH BAG OPENER FOR PLASTIC PELLETS

The most recent innovation was designed for the plastics industry, where small pellets are stored and protected during transport in huge polyvinyl bags. To unload, the bags must be opened quickly and thoroughly. Kewanee incorporates its bag opener into the lift backstop. Blades automatically cut open the bag and allow the contents free fall onto a variety of take-away conveyors.



Kewanee Hydraulic

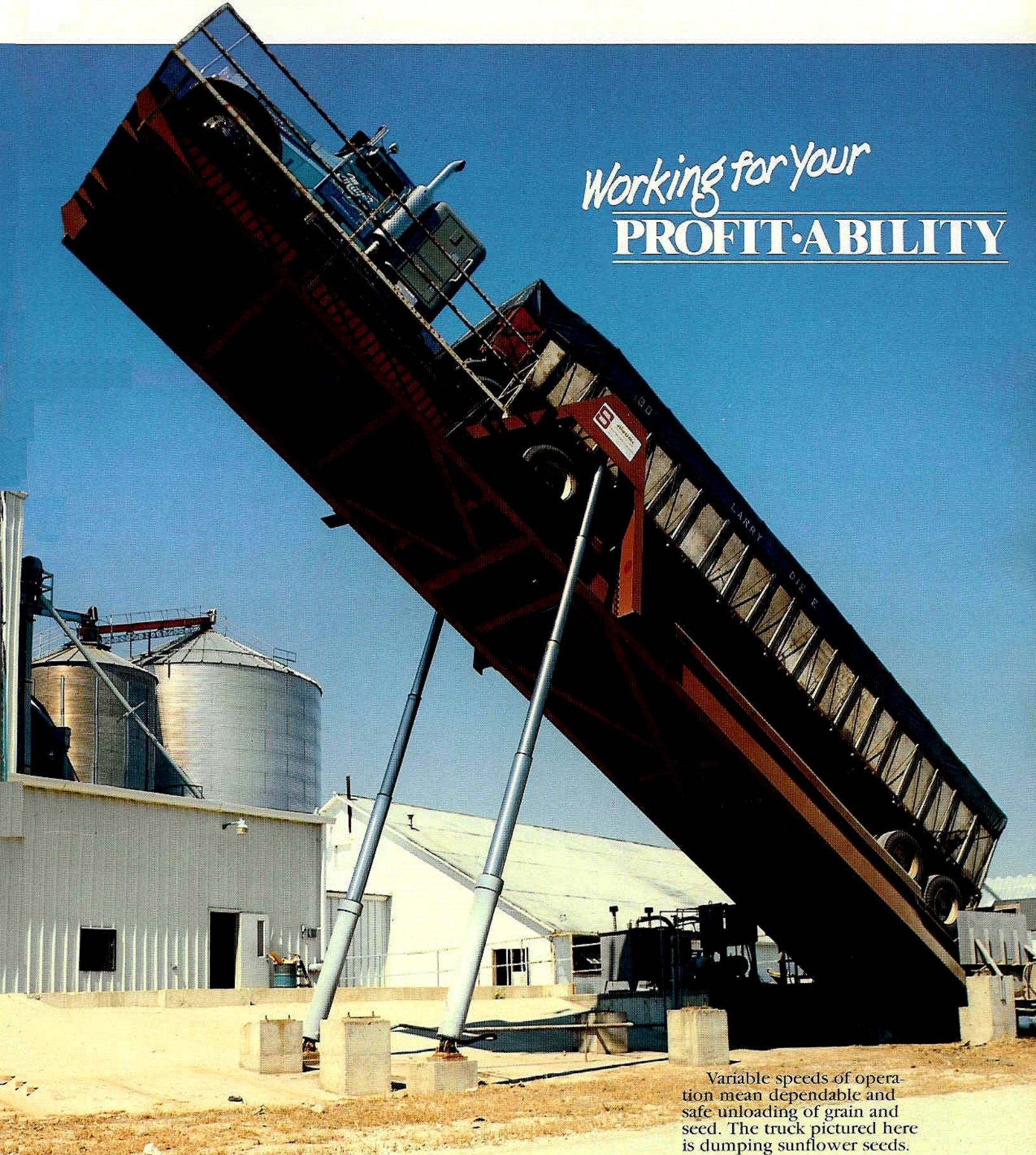


Screw Conveyor Corporation manufactures "high tilt" truck dumpers for non free flowing materials such as wood chips. In addition, Screw Conveyor also manufactures wood chip hoppers to work as an efficient and economical team with their truck dumpers.

- A. The controlled flow of wood chips into the hopper starts as the lift begins.
- B. Hopper accommodates the large volume of wood chips necessary to facilitate rapid unloading and distribution to the next operation.
- C. The 63° "high tilt" speeds unloading. Chain hold downs and backstops are provided for safe operation.

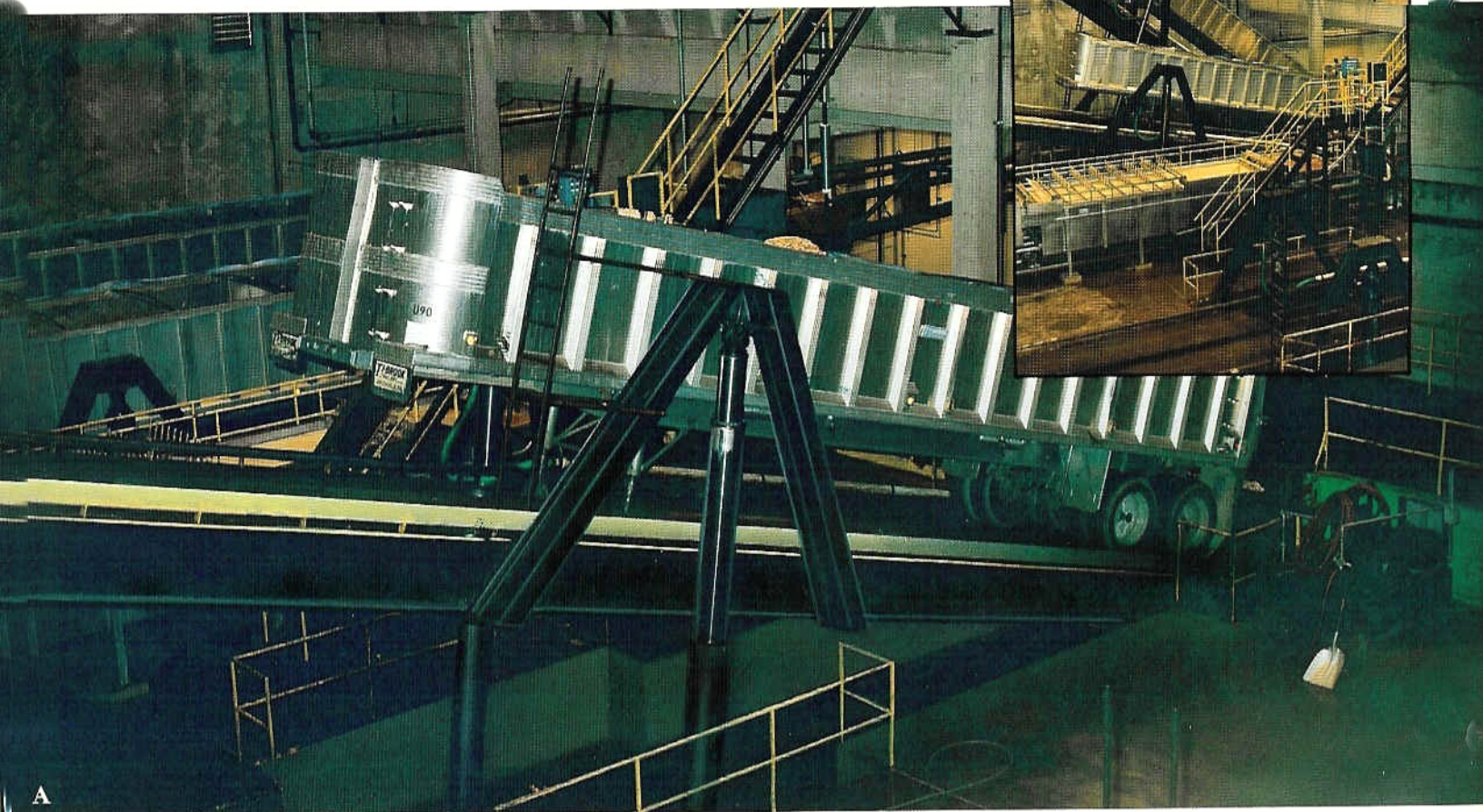
Truck Dumpers...Used Worldwide...

Working for your
PROFIT·ABILITY

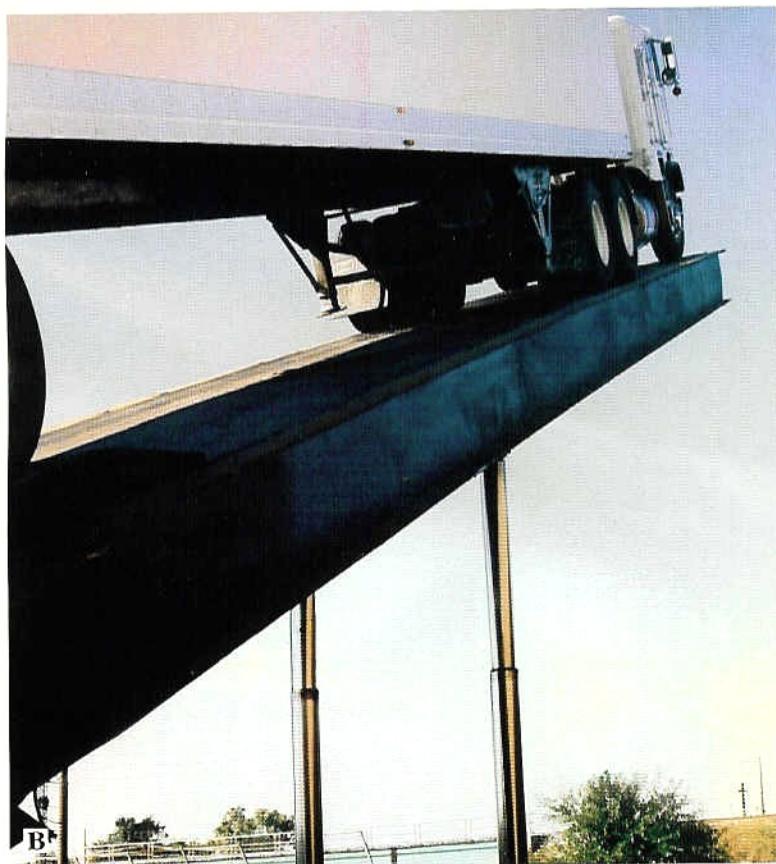


Variable speeds of operation mean dependable and safe unloading of grain and seed. The truck pictured here is dumping sunflower seeds.

In Many Industries.



A



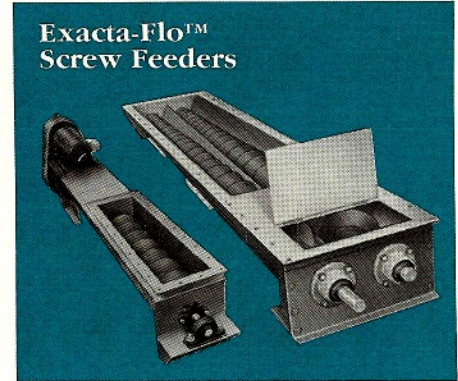
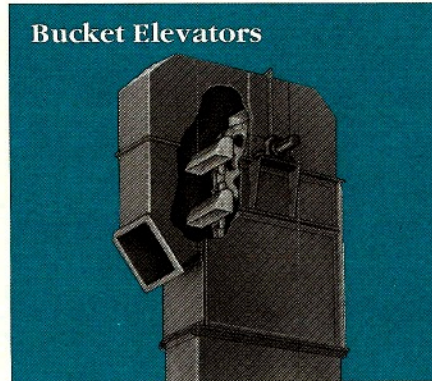
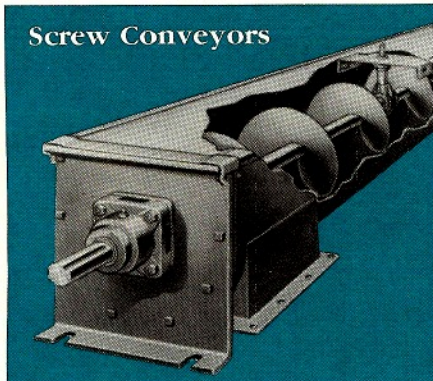
B



C

- A. This multiple dumper installation at a rendering plant works efficiently with various products such as feathers and offal.
- B. Screw Conveyor can manufacture platforms to handle longer trailers and tractor-trailer combinations. Even though the tractor wheels extend to the end of the platform, the total unit remains stable and balanced.
- C. Scale mounted truck dumpers (lever system shown) are also available with load cell systems. Electronic load cells with digital weight indicator, printer with gross, tare and net weights, time/date and zero set feature are available. A computer interface system can also be provided.

Other Quality Equipment from Screw Conveyor Corporation That Can Be Used With Kewanee Truck Dumpers.



Kewanee Hydraulic Truck Dumper SAFETY PRACTICES

In order to prevent personal injuries and/or property damage, the following suggestions are generally recommended. They are not to be considered complete nor specific for any one installation. Applicable safety codes will vary from one location to another. Variations in installation arrangement and other local operating conditions require that safety procedures, rules and devices be given separate consideration for each installation.

We do feel that making a safe place to work is the combined responsibility of the supplier (ourselves), the installer and the user.

SAFETY RULES

1. **Only authorized personnel should operate the dumper.** The brakes should be applied to all wheels and the truck should be left in gear before the platform is raised.
2. **Truck drivers and other personnel should be visibly clear of the dumper and receiving pit area. The front end of the truck must be chained to the platform when the angle of lift is 45° or over.** The truck should only be raised to the minimum height necessary to unload
3. **Do not** allow anyone to stand to the rear of the dumper or underneath it while it is in a raised or tilted position.
4. **Keep the next truck in line at a safe distance from the dumper entrance.**
5. **Do not** allow anyone to stay on or in the truck while operating the dumper during the unloading cycle.
6. **The operator should not jar the platform because "humping" the dumper is a dangerous practice and should not be permitted.** "Humping" is when the operator rapidly and repeatedly actuates the electrical "platform raise/lower" switch from one position to the other and back again. **This causes a severe shock to the hydraulic system and structural members and can result in costly damage and possible injury.** This could also cause a large quantity of material suddenly breaking loose and sliding to the rear of the truck with considerable force, which could cause

the contents. The operator working area and areas adjacent to the dumper must be maintained in an uncluttered condition to prevent accidental loss of footing.

the back wheels to bounce or lift over the wheel stops. This is especially true when the dumper platform is at a 45° angle.

7. The operator should check that the rear wheel assembly is securely fastened to the trailer bed. **Trucks in apparent disrepair that might create problems when raised, such as broken shackles, etc., should immediately be rejected and never raised.**

You may consult our Engineering Department concerning safety equipment and procedures pertaining to such additional equipment as may be necessary or to the design of any special features that may be required to meet all safety requirements.

This truck dumper is potentially dangerous if it is not properly installed or maintained. Our Service Department is available to help you maintain this dumper and to advise you of any changes, alterations or adjustments that might be necessary in order to maintain a safe, reliable unit.

The choice of what equipment or safety features are required and the implementation and use of safety features are the sole responsibility of the user or owner.



Screw Conveyor Corporation

Kewanee Users

Because of space limitations, we can only present a partial listing of our extensive user base.

CUSTOMER	ANGLE OF TILT	TONS	MATERIAL
ConAgra, Inc. Enterprise, AL	40	50	Grain
Parker Peanut Co., Inc. Suffolk, VA	40	40	Peanuts
K.W. Plastics Bakersfield, CA	63	50	Plastic Chips
Continental Grain Company Memphis, TN	35	60	Grain
Minnesota Power & Light Co. Duluth, MN	63	50	Wood Chips
River Valley By-Products Division of Tyson Foods, Inc. Morrison Bluff, AR	55	60	Feathers and Offal
I.A. Construction Corp. Gumboro, DE	50	60	Pea Gravel
Quaker Oats Co. Cedar Rapids, IA	45	70	Grain
Medium Security Institution Augusta County, VA	63	40	Wood Chips
Seaboard Seed Company Bristol, IL	35	60	Grain & Seed
Pond Bros. Peanut Co., Inc. Suffolk, VA	41	60	Peanuts
Del Monte Corp. Markesan, WI	55	50	Green Beans
Yazoo Valley Oil Mill Greenwood, MS	43	50	Cotton Seed
Goldsboro Milling Co. Goldsboro, NC	35	60	Grain
Huebert Fiberboard Co. Boonville, MD	57	40	Wood Chips
S.D. Warren Co. Muskegon, MI	54	60	Wood Chips
Safeway Stores, Incorporated West Plains, MO	43	60	Charcoal
Frito-Lay, Inc. Frankfort, IN	38	60	Potatoes
Valdez Grain Terminal Valdez, AK	35	60	Grain
Alimentos Mejorados, S.A. Managua, Nicaragua	35	40	Grain
Farmers Peanut Co. Hawkinsville, GA	43	40	Peanuts
Jackson Paper Mfg. Co., Inc. Sylva, NC	57	50	Wood Chips
Dow Corning Corporation Midland, MI	65	50	Wood Chips
Ocean Spray Cranberries, Inc. Marlborough, MA	43	50	Cranberries
Helena Cotton Oil, Inc. Helena, AR	43	50	Cotton
Perdue, Inc. Cofield, NC	35	50	Grain
Jays Foods, Inc. Chicago, IL	40	50	Potatoes
Kingsford Company Parsons, WV	50	50	Charcoal
Compania Manufacturera De Papeles y Cartones, S.A. Talcahuano, Chile	43	50	Grain



THE EXPERIENCE
TO HANDLE IT RIGHT!™

Screw Conveyor Corporation

700 HOFFMAN STREET, HAMMOND, INDIANA 46327-1894 PHONE 219-931-1450 FAX: 800-805-6527

Winona, MS 601-283-3142
FAX: 800-213-3084

Visalia, CA 209-651-2131
FAX: 800-651-2135

Chanute, KS 316-431-0440
FAX: 800-213-3086

Atlanta, GA 770-934-2813

Guadalajara, Jal. Mexico (3) 670-6656
FAX: (3) 675-6603